

## Warranty



To receive after sales service, have the following ready when you contact our branches

1. Name of the product
2. Model number of the product
3. The area of problem
4. Phone number and address at which you can be contacted.

## Warranty Card

PRODUCT	
MODEL	
DATE PURCHASED	
WARRANTY PERIOD	
AGENCY	
AGENCY ADDRESS	

☉ KOCOM Warranties the original purchaser of this product as follows.

- 1) This product is produced under strict quality control and inspection procedures.
- 2) If this product breaks down during proper use as a result of product defect, KOCOM will repair it within one year from date of purchase free of charge.
- 3) The following cases will be subject to charge, even during warranty period:
  - a. Breakdown during transport, or through careless treatment, by consumer.
  - b. Breakdown caused by unauthorized repair, or system modification.
  - c. Breakdown caused by natural disaster or power disorder.

IP-201P-01 00. 01  
MADE IN KOREA

# KOCOM

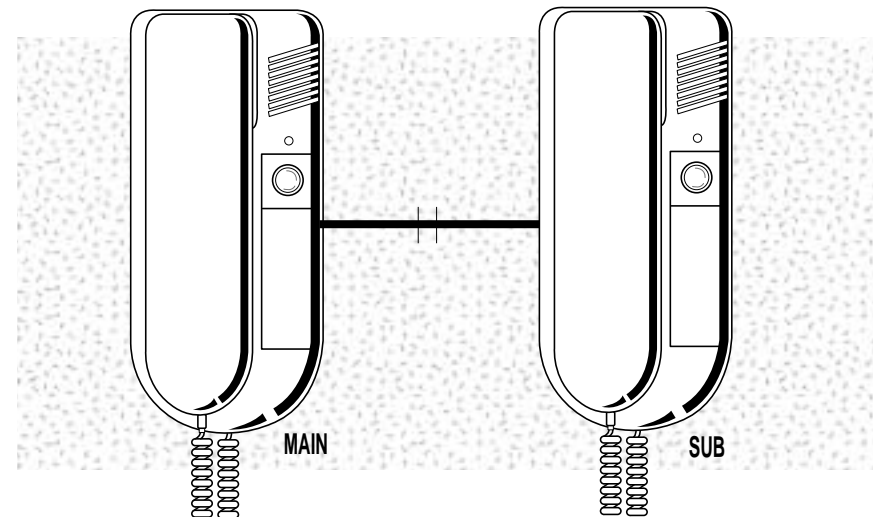
# DIRECT INTERPHONE

IP-201P USER(Installation)MANUAL

## Features

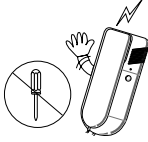
- Perfect for private conversations
- Delightful 1-melody signal sound
- Easy wiring with 2lines of non-polarity
- Power : D.C 6V (main only) 4 Piece of 1.5V batteries (one side insert) - IP-201P DC
- 2Stations full direct
- Range:  $\phi$ 0.65mm wire, 300m line
- Easily mounted on wall, desk

Thank you very much for purchasing KOCOM Interphone. please read this manual thoroughly to ensure correct usage, before operating



KOREA COMMUNICATIONS CO.,LTD.

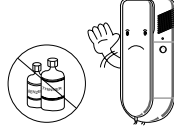
## Precautions for Operation



As this device consists of precise electronic components, and high voltage is generated internally, do not attempt to disassemble.



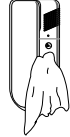
Do not drop Indoor station, and avoid strong impact.



When cleaning, never use wet hands, volatile benzene or paint thinner.

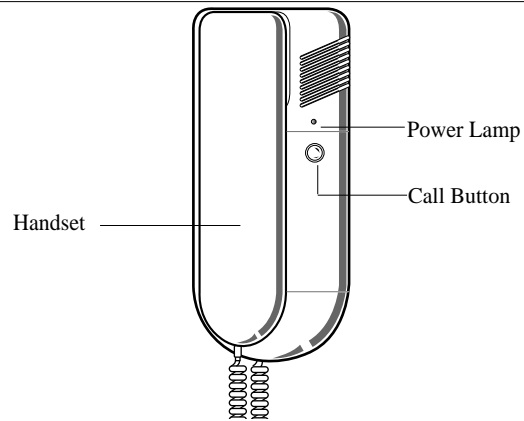


Keep away from humidifier and stove. High temperature and humidity can cause malfunction

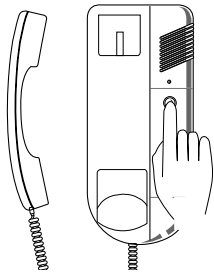


Maintain the product clear by frequently cleaning with soft cloths

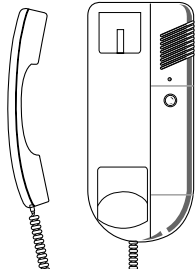
## Name of Each Part



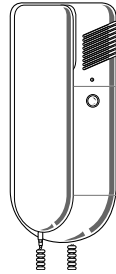
## How to operate (Instruction for operating)



When a visitor pushes the maindoor station bell,

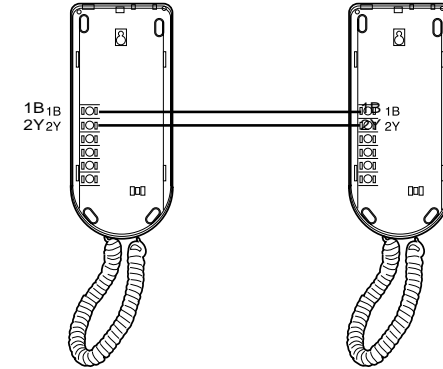


The subdoor station is ringing.

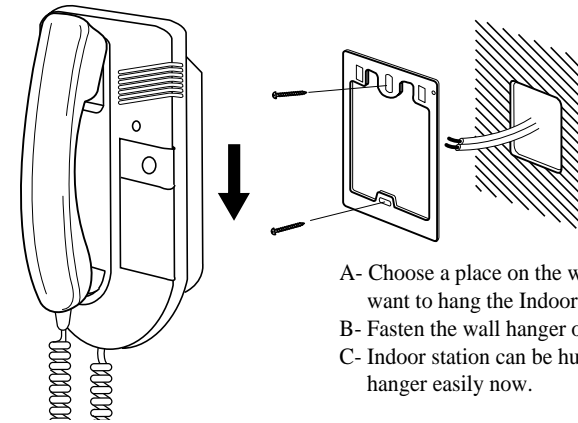


Pick up the handset and communicate with a visitor. After end of communication, return the handset where it is locked

## Wring Diagram



## Installation



## Specifications

Description	DP-201P AC	DP-201P DC
Electric source	AC	DC 6V(LR6-AA 1.5V X 4)
Consumption	In use 30mA,Signal 150mA	In use 30mA,Signal 150mA
Signal Sound	Electronic Chime	Electronic Chime
Wiring	2Wired non-polarity	2Wired non-polarity
Range	300m( ϕ 0.65mm)	300m( ϕ 0.65mm)

## Component

- Master station for Maindoor-use
- Substation for Subdoor-use
- Wall hanger for master station